



LIVESTOCK PRODUCTS

AUSTRALIA

EMBARGO: 11.30AM (CANBERRA TIME) FRI 14 AUG 2009

KEY FIGURES

TREND ESTIMATES	Jun Qtr 2008	Mar Qtr 2009	Jun Qtr 2009
	'000	'000	'000
Number slaughtered			
Cattle (excl. calves)	1 996	1 961	1 939
Calves	203	201	203
Sheep	3 109	2 749	2 641
Lambs	4 983	5 267	5 264
Pigs	1 233	1 115	1 103
Chickens	115 000	119 574	120 935

	Jun Qtr 2008	Mar Qtr 2009	Jun Qtr 2009
	tonnes	tonnes	tonnes
Meat produced			
Beef	536 128	527 398	524 264
Veal	6 349	7 174	7 475
Mutton	66 556	57 149	54 940
Lamb	101 597	107 762	108 589
Pig meat	88 715	80 010	79 221
Chicken meat	199 552	209 376	210 723
Wool receivals	98 346	91 953	92 475

	Mar Qtr 2008	Dec Qtr 2008	Mar Qtr 2009
	ML	ML	ML
Whole milk intake by factories	2 311	2 348	2 332

KEY POINTS

- In the June quarter 2009, the trend estimate for mutton production decreased 4% to 55 thousand tonnes.
- The trend estimate for wool receivals by brokers and dealers decreased 6% in the last year to the June quarter 2009.
- The original estimate for exports of live cattle increased 37% in the June quarter to 234 thousand.

INQUIRIES

For further information about these and related statistics, contact the National Information and Referral Service on 1300 135 070.

NOTES

FORTHCOMING ISSUES

ISSUE (Quarter)

RELEASE DATE

September 2009

13 November 2009



INTRODUCTION

This publication presents statistics on livestock slaughterings (including chickens), meat production, milk intake by factories, market milk sales by factories, receipts of wool by brokers and dealers, exports of live sheep and cattle and exports of meat. It also includes seasonally adjusted and trend totals for numbers slaughtered, meat produced, whole milk intake and wool receipts. More detailed information can be obtained by contacting the Australian Bureau of Statistics (ABS) or by referring to the monthly ABS publication *Livestock and Meat, Australia* (cat. no. 7218.0.55.001).

CHANGES IN THIS ISSUE

The number of tables released in the PDF of this publication have been reduced since the December 2008 release to include only summary data. More detailed data formerly contained within the PDF of this publication can now be found in the relevant Time Series Spreadsheets on the Downloads tab of *Livestock Products, Australia* (cat. no. 7215.0).



ABBREVIATIONS

'000 thousand

ABS Australian Bureau of Statistics

ML megalitre

t tonne

UHT ultra heat treated

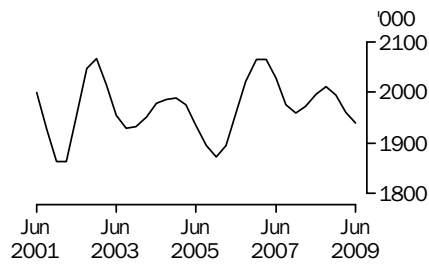
°C degrees Celsius

Brian Pink

Australian Statistician

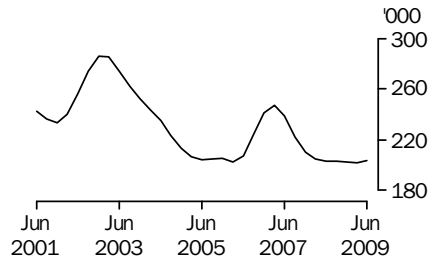
LIVESTOCK SLAUGHTERED TREND

CATTLE (EXCLUDING CALVES)



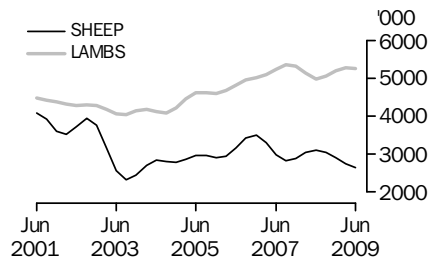
In the year to the June quarter 2009, the number of cattle (excluding calves) slaughtered decreased 3% to 1.9 million.

CALVES



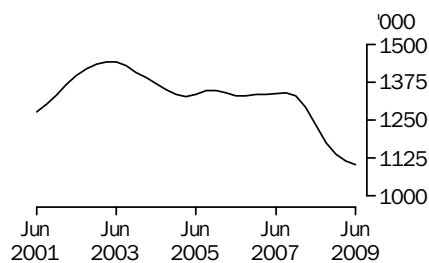
The number of calves slaughtered increased less than 1% in the year to the June quarter 2009 to 203 thousand.

SHEEP AND LAMBS



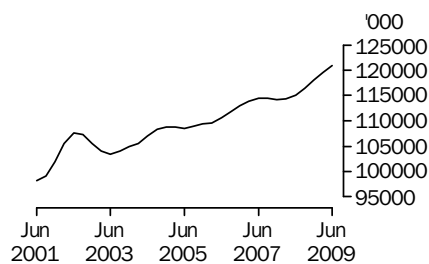
In the year to the June quarter 2009, the number of sheep slaughtered fell 15% to 2.6 million while lamb slaughterings increased 6% to 5.3 million.

PIGS



Over the last year, pig slaughterings decreased 11% to 1.1 million.

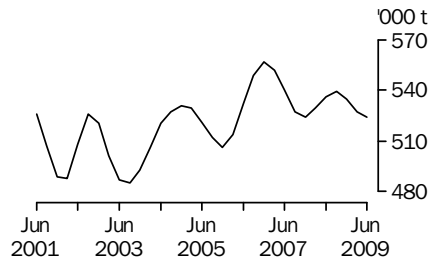
CHICKENS



Chicken slaughterings increased 5% to 121 million in the year to the June quarter 2009.

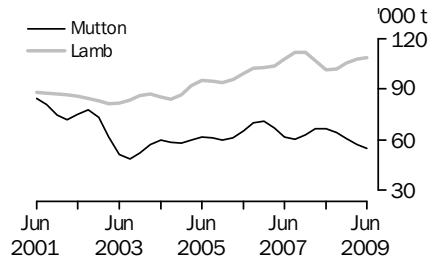
MEAT PRODUCTION TREND

BEEF



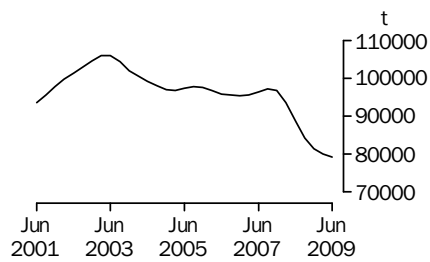
Beef production decreased 2% to 524 thousand tonnes in the year to the June quarter 2009.

MUTTON AND LAMB



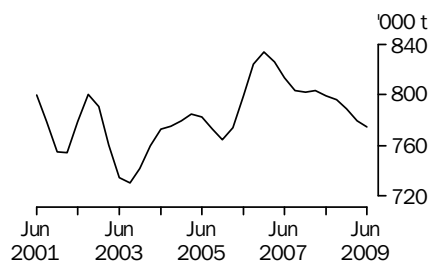
While mutton production decreased 17% to 55 thousand tonnes in the year to the June quarter 2009, lamb production increased 7% to 109 thousand tonnes.

PIG MEAT



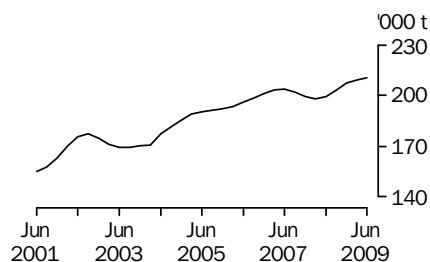
Pig meat production decreased 11% to 79 thousand tonnes in the year to the June quarter 2009.

TOTAL RED MEAT



Total red meat production dropped 3% to 774 thousand tonnes over the year to the June quarter 2009.

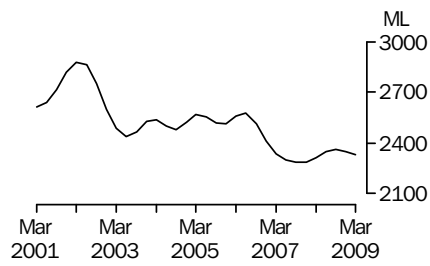
CHICKEN MEAT



In the year to the June quarter 2009, chicken meat production increased 6% to 211 thousand tonnes.

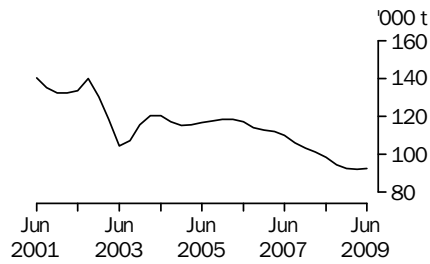
LIVESTOCK PRODUCTS TREND

WHOLE MILK INTAKE BY FACTORIES



Whole milk intake by factories was up 1% to 2,332 megalitres in the year to the March quarter 2009.

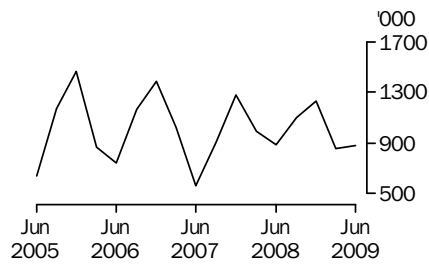
BROKERS AND DEALERS RECEIVALS OF TAXABLE WOOL



Wool receipts by brokers and dealers decreased 6% to 92 thousand tonnes in the year to the June quarter 2009.

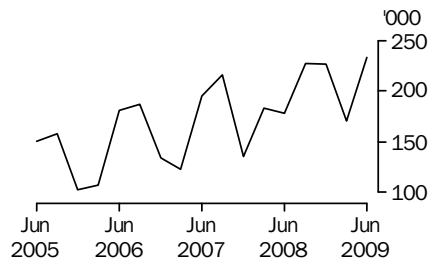
LIVESTOCK EXPORTS ORIGINAL

EXPORTS OF LIVE SHEEP



Live sheep exports decreased 1% to 878 thousand in the year to the June quarter 2009. Gross value increased 20% to \$77.7 million, while unit value increased 21% to \$88.55.

EXPORTS OF LIVE CATTLE



Exports of live cattle increased 31% to 234 thousand in the year to the June quarter 2009. Gross value increased 35% to \$146.9 million, and unit value increased 3% to \$629.11.

LIST OF TABLES AND GRAPHS

page

OVERVIEW

- 1** Livestock slaughtered, Australia 8
- 2** Livestock products, Australia 9

EXPORTS OF MEAT AND LIVE ANIMALS

- 3** Exports of fresh, chilled, frozen and processed meat, Australia 10
- 4** Exports of live sheep and cattle, Australia 11

LIVESTOCK PRODUCTS

- 5** Whole milk intake by factories, by state 12
- 6** Market milk sales by factories, by state 13
- 7** Brokers and dealers receivals of taxable wool, by state 14

LIVESTOCK SLAUGHTERED(a), Australia: All Series

Quarter	Bulls, bullocks and steers	Cows and heifers	Cattle (excluding calves)	Calves	Sheep	Lambs	Pigs	Chickens(b)
	'000	'000	'000	'000	'000	'000	'000	'000
ORIGINAL								
2008								
March	929.2	874.2	1 803.5	96.4	3 408.9	5 013.3	1 263.3	r111 916.7
June	1 079.5	1 075.9	2 155.3	208.3	2 912.0	5 022.4	1 282.3	r114 140.7
September	1 051.6	955.6	2 007.2	370.7	2 511.7	4 653.9	1 154.6	r115 380.7
December	1 028.8	960.3	1 989.1	140.7	3 184.1	5 652.6	1 141.5	r121 394.3
2009								
March	951.6	952.7	1 904.3	106.2	3 157.7	5 310.1	1 067.6	r119 183.8
June	936.3	1 053.1	1 989.5	194.8	2 428.5	5 151.0	1 158.1	118 850.7
SEASONALLY ADJUSTED								
2008								
March	979.2	917.6	1 896.7	192.2	2 972.3	5 045.0	1 299.1	112 511.0
June	1 084.7	968.0	2 052.8	211.2	3 187.6	4 974.7	1 233.5	116 116.5
September	1 026.5	978.5	2 005.0	205.2	3 092.5	4 941.2	1 159.2	116 002.1
December	995.4	996.7	1 992.2	195.6	2 822.0	5 354.2	1 150.4	118 129.5
2009								
March	982.8	982.3	1 965.0	204.8	2 752.9	5 278.7	1 098.5	119 933.2
June	962.1	967.5	1 929.6	203.6	2 664.6	5 182.1	1 113.4	120 777.0
TREND								
2008								
March	1 032.4	940.3	1 972.8	204.6	3 048.1	5 130.4	1 293.4	114 278.7
June	1 039.8	955.7	1 995.5	202.8	3 109.3	4 982.6	1 233.0	115 000.3
September	1 031.3	980.1	2 011.4	202.9	3 047.2	5 057.8	1 175.4	116 439.7
December	1 006.7	988.3	1 995.1	202.2	2 896.8	5 199.7	1 137.6	118 149.9
2009								
March	978.4	982.8	1 961.2	201.5	2 749.4	5 267.2	1 115.3	119 574.3
June	965.1	974.4	1 939.5	203.3	2 641.1	5 263.6	1 103.0	120 935.1

r revised

(a) For human consumption. Refer to paragraph 7 in the Explanatory Notes.

(b) Excludes Tasmania, Northern Territory and the Australian Capital Territory.

Quarter	RED MEAT(a)						Chicken meat(b)(c)	Whole milk intake by factories(d)	Brokers and dealers receivals of taxable wool(e)
	Beef	Veal	Mutton	Lamb	Pig meat	Total red meat			
	tonnes	tonnes	tonnes	tonnes	tonnes	tonnes	tonnes	ML	tonnes
ORIGINAL									
2008									
March	486 457	4 250	73 912	105 745	90 999	761 362	r192 383	2 118	98 799
June	576 336	6 807	59 803	102 860	93 013	838 819	r199 020	1 797	82 044
September	538 945	9 473	53 017	91 360	83 093	775 887	r204 359	2 341	100 421
December	533 421	5 443	68 978	113 698	80 924	802 464	r209 611	r3 098	r101 264
2009									
March	517 143	5 538	64 962	111 218	76 043	774 904	r208 725	2 153	r93 538
June	530 661	7 286	48 387	106 668	83 897	776 900	209 761	nya	75 378
SEASONALLY ADJUSTED									
2008									
March	509 464	5 893	65 103	103 811	94 370	778 640	193 895	2 290	100 341
June	553 545	6 708	68 107	102 116	88 534	819 010	199 674	2 390	99 891
September	536 514	6 555	64 677	98 738	82 620	789 105	205 450	2 356	94 082
December	532 356	6 607	59 087	108 136	82 620	788 806	206 415	2 338	90 282
2009									
March	528 799	7 508	57 190	109 010	78 832	781 339	210 376	2 335	93 605
June	522 722	7 344	55 242	106 604	79 857	771 768	210 245	nya	92 240
TREND									
2008									
March	529 680	6 478	66 340	106 933	93 642	803 073	198 015	2 311	101 220
June	536 128	6 349	66 556	101 597	88 715	799 346	199 552	2 346	98 346
September	539 232	6 555	64 197	101 954	84 130	796 068	203 521	2 361	94 455
December	534 725	6 884	60 460	105 423	81 455	788 948	207 347	2 348	92 486
2009									
March	527 398	7 174	57 149	107 762	80 010	779 493	209 376	2 332	91 953
June	524 264	7 475	54 940	108 589	79 221	774 490	210 723	nya	92 475

nya not yet available

r revised

(a) Carcass weight excluding offal. Refer to paragraphs 5 and 6 in the Explanatory Notes.

(b) Excludes Tasmania, Northern Territory and the Australian Capital Territory.

(c) Dressed weight of whole birds, pieces and giblets.

(d) Original data sourced from Dairy Australia. Includes whole milk equivalent of farm cream intake.

(e) Taxable receivals only. Refer to paragraphs 21 and 22 in the Explanatory Notes.

EXPORTS OF FRESH, CHILLED, FROZEN AND PROCESSED MEAT(a)(b), Australia: **Original**

Period	FRESH, CHILLED OR FROZEN MEAT									PROCESSED MEAT	
	Beef bone-in(c)	Beef bone-out(c)	Veal bone-in	Veal bone-out	Mutton bone-in	Mutton bone-out	Lamb bone-in	Lamb bone-out	Pork	Bacon and ham(d)	Canned meat(e)
	tonnes	tonnes	tonnes	tonnes	tonnes	tonnes	tonnes	tonnes	tonnes	tonnes	tonnes
2006-07	52 389	971 531	3 753	5 792	124 851	42 826	127 491	29 042	41 313	550	16 051
2007-08	57 199	917 494	3 704	5 049	119 496	43 827	134 101	32 499	39 138	772	12 493
2008-09	48 033	955 159	4 142	4 593	107 030	44 103	131 469	31 376	32 305	463	12 907
2008											
March	11 194	183 511	772	572	34 010	11 475	31 496	7 469	8 949	225	3 400
June	17 919	255 221	930	988	28 276	11 982	30 555	8 291	9 568	239	3 432
September	12 983	238 419	1 397	1 801	20 540	8 443	25 605	5 047	8 953	266	3 287
December	12 956	258 168	991	1 385	r32 180	13 617	37 673	9 124	8 111	101	3 381
2009											
March	r9 708	r216 388	r645	r570	r29 110	r12 482	r34 172	r8 807	r7 528	64	r2 940
June	12 387	242 183	1 108	838	25 201	9 561	34 019	8 398	7 713	32	3 299

r revised

(a) Compiled from Australian Customs Service data. Refer to paragraph 11 in the Explanatory Notes.

(b) Export data may be subject to revision.

(c) Includes buffalo meat.

(d) Cured carcass weight, and stated net weight of packs of canned bacon and ham. Refer to paragraph 13 in the Explanatory Notes.

(e) Canned meat excludes bacon and ham. Refer to paragraph 14 in the Explanatory Notes.

EXPORTS OF LIVE SHEEP AND CATTLE(a), Australia: Original

Period	Number	Gross weight	Gross value	Unit value(b)
	'000	'000 tonnes	\$'000	\$
SHEEP				
2006-07	4 137.9	198.8	288 697	69.77
2007-08	4 069.0	197.0	286 442	70.40
2008-09	4 063.5	199.0	339 048	83.44
2008				
March	992.8	48.2	67 334	67.82
June	886.9	42.9	64 985	73.27
September	1 099.1	52.8	86 570	78.77
December	1 234.0	60.5	101 446	82.21
2009				
March	r852.8	43.0	r73 316	r85.97
June	877.7	42.8	77 717	88.55
CATTLE				
2006-07	638.0	216.1	437 427	685.58
2007-08	713.3	241.2	450 511	631.63
2008-09	857.7	286.0	563 770	657.31
2008				
March	183.5	59.2	115 127	627.51
June	178.2	61.9	109 111	612.23
September	227.1	75.1	140 044	616.58
December	226.8	71.5	162 162	714.97
2009				
March	r170.3	57.8	r114 672	r673.49
June	233.5	81.6	146 892	629.11

r revised

(a) Export data may be subject to revision.

(b) Gross value divided by the number of animals exported.

WHOLE MILK INTAKE, by Factories(a): All Series

Quarter	New South Wales(b)	Victoria	Queensland	South Australia (c)	Western Australia	Tasmania	Australia
	ML	ML	ML	ML	ML	ML	ML
ORIGINAL							
2007							
December	294	2 046	134	180	89	251	2 993
2008							
March	244	1 374	116	143	69	172	2 118
June	236	1 117	110	138	76	120	1 797
September	271	1 576	128	149	86	130	2 341
December	296	r2 112	138	r185	100	268	r3 098
2009							
March	251	1 364	125	148	78	186	2 153
SEASONALLY ADJUSTED							
2007							
December	261	1 477	123	151	78	161	2 253
2008							
March	259	1 519	121	149	78	163	2 290
June	260	1 599	121	153	80	177	2 390
September	264	1 549	122	156	83	183	2 356
December	263	1 530	127	156	88	172	2 338
2009							
March	267	1 515	131	158	88	176	2 335
TREND							
2007							
December	262	1 511	121	150	79	163	2 288
2008							
March	260	1 533	121	151	78	168	2 311
June	260	1 558	122	153	80	174	2 346
September	262	1 559	123	155	83	178	2 361
December	264	1 536	127	157	86	177	2 348
2009							
March	266	1 513	130	158	89	175	2 332

r revised

(a) Includes whole milk equivalent of farm cream intake.
Refer to paragraphs 18 and 19 in the Explanatory
Notes.

(b) Includes data for the Australian Capital Territory.

(c) Includes data for the Northern Territory.

Source: Original series data from Dairy Australia.

MARKET MILK SALES, by Factories(a): All Series

Quarter	New South Wales(b)	Victoria	Queensland	South Australia(c)	Western Australia	Tasmania	Australia
	ML	ML	ML	ML	ML	ML	ML
ORIGINAL							
2007							
December	168	127	125	52	59	14	545
2008							
March	167	129	124	50	59	14	542
June	173	135	127	52	60	14	561
September	175	135	129	53	62	14	568
December	172	r132	125	52	61	14	r 556
2009							
March	172	131	127	51	59	14	553
SEASONALLY ADJUSTED							
2007							
December	170	128	125	52	59	14	549
2008							
March	170	133	126	52	60	14	554
June	171	132	127	51	60	14	556
September	172	132	126	51	61	14	557
December	174	133	126	52	62	14	561
2009							
March	175	133	129	52	59	14	562
TREND							
2007							
December	170	129	125	52	59	14	550
2008							
March	170	131	126	52	60	14	553
June	171	132	126	52	61	14	556
September	172	133	126	52	61	14	558
December	174	133	127	52	61	14	560
2009							
March	175	133	128	52	60	14	562

r revised

(a) Includes white, flavoured, high and low fat milk and UHT milk. Refer to paragraphs 18 and 20 in the Explanatory Notes.

(b) Includes data for the Australian Capital Territory.

(c) Includes data for the Northern Territory.

Source: Original series data from Dairy Australia.

BROKERS AND DEALERS RECEIVALS OF TAXABLE WOOL(a): All Series

Quarter	New South Wales	Victoria	Queensland	South Australia	Western Australia	Tasmania	Australia	% of total received by brokers
	tonnes	tonnes	tonnes	tonnes	tonnes	tonnes	tonnes	%
ORIGINAL								
2008								
March	29 895	24 831	2 193	14 869	25 320	1 691	98 799	81.1
June	29 094	21 438	3 370	11 927	13 771	2 443	82 044	79.3
September	35 673	22 069	3 395	16 466	20 177	2 642	100 421	83.9
December	31 407	27 368	2 185	r14 231	23 437	2 636	r101 264	r77.4
2009								
March	27 243	22 865	1 886	r12 232	27 767	1 545	r93 538	r79.3
June	25 102	18 833	3 363	10 893	14 767	2 419	75 378	77.3
SEASONALLY ADJUSTED								
2008								
March	33 527	24 759	3 094	16 064	20 530	2 368	100 341	..
June	33 112	26 479	2 896	14 753	20 139	2 513	99 891	..
September	30 817	23 119	2 564	14 653	20 553	2 377	94 082	..
December	29 438	22 299	2 716	12 423	21 178	2 228	90 282	..
2009								
March	30 350	22 758	2 658	13 050	22 614	2 176	93 605	..
June	28 500	23 021	2 867	13 641	21 770	2 442	92 240	..
TREND								
2008								
March	33 141	25 959	3 134	15 865	20 851	2 270	101 220	..
June	32 499	24 977	2 912	15 144	20 425	2 389	98 346	..
September	31 268	23 697	2 658	13 937	20 507	2 388	94 455	..
December	30 115	22 837	2 655	13 248	21 357	2 274	92 486	..
2009								
March	29 447	22 536	2 717	13 048	21 943	2 263	91 953	..
June	29 086	22 852	2 802	13 193	22 221	2 321	92 475	..

.. not applicable
r revised

(a) Taxable receivals only. Refer to paragraphs 21 and 22 in the Explanatory Notes.

EXPLANATORY NOTES

INTRODUCTION

1 This publication contains information on livestock slaughterings, meat production, exports of live sheep and cattle, exports of fresh, chilled, frozen and processed meat, whole milk intake by factories, market milk sales by factories and receivals of taxable wool by wool brokers and dealers.

2 Data in this publication have been revised where necessary and as a consequence may not agree with similar data shown in previous publications.

3 Where figures have been rounded, discrepancies may occur between sums of the component items and totals.

4 Unless otherwise indicated, Australian totals include data for all states/territories.

LIVESTOCK SLAUGHTERINGS AND MEAT PRODUCTION

5 The statistics on slaughterings for red meat production are based on a monthly collection from abattoirs and other major slaughtering establishments and include estimates of animals slaughtered on farms, by country butchers and other small slaughtering establishments.

6 Red meat is shown in carcass weight and excludes offal.

7 Care should be taken when using this information as the data only relate to slaughterings for human consumption and do not include animals condemned, slaughtered for pet food or those killed for boiling down.

8 Poultry slaughterings and chicken meat produced statistics have been compiled from quarterly returns supplied by commercial poultry slaughtering establishments and comprise boilers, fryers and roasters. Many small producers are excluded from the collection; however, the statistics represent a high level of coverage.

9 Chicken meat is shown in dressed weight of whole birds, pieces and giblets.

10 Details about unpublished slaughterings and meat production statistics can be found in the Livestock Slaughtering Collection brief on the Australian Bureau of Statistics (ABS) website and also are available on request. Inquiries should be made to the *National Information and Referral Service* on 1300 135 070.

EXPORTS OF FRESH, CHILLED, FROZEN AND PROCESSED MEAT

11 International trade statistics are compiled by the ABS from information submitted by exporters and importers or their agents to the Australian Customs Service. Factors can be applied to beef, veal, mutton and lamb bone-out figures to derive bone-in carcass weight which, when added to bone-in figures, shows total exports in carcass weight. The factor for beef and veal is 1.5 and for mutton and lamb, 2.0. This information is sourced from the Australian Department of Agriculture, Fisheries and Forestry.

12 Beef also includes buffalo meat.

13 Bacon and ham shown is the cured carcass weight of smoked or cooked bacon and ham. It also includes the stated net weight of packs of canned bacon and ham.

14 Canned meat is shown as the canned weight and excludes canned bacon and ham.

LIVE SHEEP AND CATTLE EXPORTS

15 Sheep and cattle exported for breeding are excluded.

16 The unit value is obtained by dividing the gross value by the number of animals exported.

17 The graphs of livestock exports present quarterly original estimates for at least the last five years for the major commodities. These graphs highlight the major movements in the estimates over that period.

MILK

18 Data collected by Dairy Australia. Data for the latest quarter are not yet available.

19 Whole milk intake by factories includes the whole milk equivalent of farm cream intake.

EXPLANATORY NOTES *continued*

MILK *continued*

20 Market sales includes white, flavoured, high and low fat milk and ultra heat treatment (UHT) milk. Interstate transfers of UHT milk have been included in their state of destination. UHT milk is milk that is heated to high temperatures to produce a milk which does not require refrigeration for a sustained period of time when unopened.

WOOL RECEIVALS

21 Refers to the amount of taxable wool received by brokers and purchased by dealers from wool producers. It excludes wool received by brokers on which tax has already been paid by other dealers (private buyers) or brokers.

22 Data are based on the state in which wool has been received, and do not necessarily reflect the production of wool in that state.

SEASONAL ADJUSTMENT

23 Seasonal adjustment is a means of removing the estimated effects of normal seasonal variation from the series so that the effects of other influences can be more clearly recognised.

24 In the seasonal adjustment of the livestock estimates, account has been taken of both normal seasonal factors and 'trading day' effects, where significant. Seasonal adjustment does not remove from the series the effect of irregular influences (e.g. abnormal weather, industrial disputes).

25 The state component series have been seasonally adjusted independently. Therefore, the adjusted components may not add to the Australian group totals.

26 In this publication, the seasonally adjusted estimates are produced by the concurrent seasonal adjustment method which takes account of the latest available original estimates. This method improves the estimation of seasonal factors and, therefore, the seasonally adjusted and trend estimates for the current and previous months. As a result of this improvement, revisions to the seasonally adjusted and trend estimates will be observed for recent periods. A more detailed review is conducted annually prior to the September release, using data up to and including the August release.

27 For further information, see *Time Series Analysis Frequently Asked Questions, 2003* (cat. no. 1346.0.55.002).

28 From September 2007, improved methods of producing seasonally adjusted estimates, focused on the application of Autoregressive Integrated Moving Average (ARIMA) modelling techniques, were implemented. The ARIMA modelling technique can be used to extend original estimates beyond the end of a time series.

29 For further information on ARIMA modelling, see the feature article 'Use of ARIMA modelling to reduce revisions' in *Australian Economic Indicators, Oct 2004* (cat. no. 1350.0).

TREND ESTIMATES

30 The graphs of livestock slaughtered, meat production and livestock products present quarterly trend estimates for at least the last five years for the major commodities. These graphs highlight the major movements in the estimates over that period.

31 A trend estimate is obtained by reducing the irregular component in the seasonally adjusted series. For quarterly data, trend estimates are derived by applying a 7-term Henderson moving average to the seasonally adjusted series. Revisions of trend estimates will also occur with revisions to the original data and re-estimation of seasonal factors.

32 The state component series have been adjusted independently. Therefore, the adjusted components may not add to the Australian group totals.

33 For further information, see *Information Paper: A Guide to Interpreting Time Series - Monitoring Trends, 2003* (cat. no. 1349.0).

EXPLANATORY NOTES *continued*

RELATED PUBLICATIONS

34 Other ABS publications containing livestock data include:

- *Agricultural Commodities, Australia* (cat. no. 7121.0)
- *Agricultural Commodities: Small Area Data, Australia* (cat. no. 7125.0)
- *Livestock and Meat, Australia* (cat. no. 7218.0.55.001)
- *Value of Agricultural Commodities Produced, Australia* (cat. no. 7503.0)

35 Current publications and other products released by the ABS are listed under the Statistics and Themes pages on the ABS website <<http://www.abs.gov.au>>. The ABS also issues a daily Release Advice on the website which details products to be released in the week ahead.

GENERAL ACKNOWLEDGMENT

36 ABS publications draw extensively on information provided freely by individuals, businesses, governments and other organisations. Their continued cooperation is very much appreciated. Without it, the wide range of statistics published by the ABS would not be available. Information received by the ABS is treated in strict confidence as required by the *Census and Statistics Act 1905*.

FOR MORE INFORMATION . . .

INTERNET **www.abs.gov.au** the ABS website is the best place for data from our publications and information about the ABS.

INFORMATION AND REFERRAL SERVICE

Our consultants can help you access the full range of information published by the ABS that is available free of charge from our website. Information tailored to your needs can also be requested as a 'user pays' service. Specialists are on hand to help you with analytical or methodological advice.

PHONE 1300 135 070

EMAIL client.services@abs.gov.au

FAX 1300 135 211

POST Client Services, ABS, GPO Box 796, Sydney NSW 2001

FREE ACCESS TO STATISTICS

All statistics on the ABS website can be downloaded free of charge.

WEB ADDRESS www.abs.gov.au